

Holmes Avenue

Hove, BN3 7LF



Holmes Avenue

Hove, BN3 7LF

£3,000 Per month

This imposing detached corner property stands in gardens surrounding the house on three sides and is located in Hove's ever popular Nevill area. This immensely light and spacious 1930s family home is only a short walk away from Hove Park and popular local primary schools as well as being in the catchment area for Blatchington Mill School in West Hove. Located on the tree-lined Holmes Avenue which features the historic Blatchington Windmill at its end, this family home provides a wonderful living environment with many local amenities on the doorstep. Aldrington train station is within a 12 minute walk and provides access to both Brighton and London.

Unfurnished, long term let, available now.



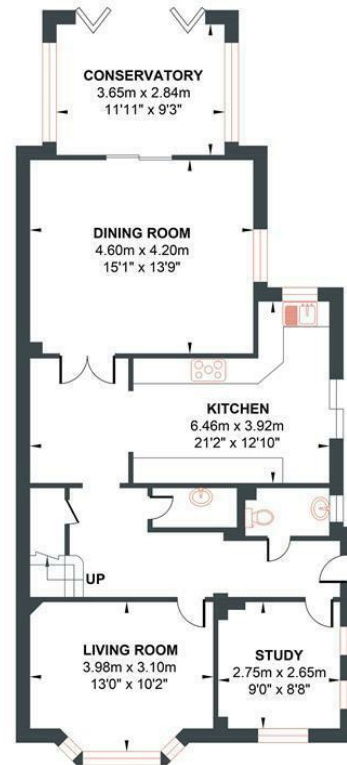
- Substantial individual detached family home
- Prominent Corner Position
- Provides spacious and versatile living space
- Pleasant sunny corner plot gardens
- Favoured location close Blatchington Mill school and amenities
- No Chain Involved
- Must be viewed-Sole Agents
- Unfurnished
- Available now
- EPC = D

Energy Efficiency Rating		
	Current	Potential
Very energy efficient - lower running costs		
(92 plus) A		
(81-91) B		
(69-80) C		
(55-68) D		
(39-54) E		
(21-38) F		
(1-20) G		
Not energy efficient - higher running costs		
England & Wales		
EU Directive 2002/91/EC		



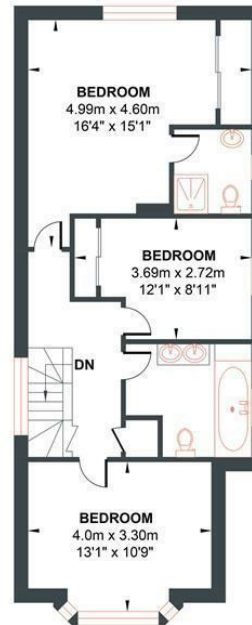
HOLMES AVENUE

Approximate Gross Internal Area = 156.44 sq m / 1683.90 sq ft
Illustration for identification purposes only, measurements are approximate, not to scale.



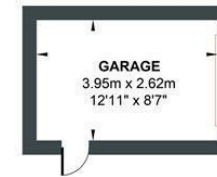
GROUND FLOOR

Approximate Floor Area
945.07 sq ft
(87.80 sq m)



FIRST FLOOR

Approximate Floor Area
627.96 sq ft
(58.34 sq m)



GARAGE

Approximate Floor Area
110.86 sq ft
(10.30 sq m)



